



Madingley News

JUNE 2020



Madingley Hall: new life on the lower lake (Photograph: Chris Baldwin)

IN THIS ISSUE

- | | |
|--|--|
| 2. Parish Council Notes
Community Speedwatch | 12. News from the Cambridge American
Cemetery |
| 3. Church News | 14. News from the Stephen Perse Pre-prep
Madingley Cricket Club
Raising funds for Uganda |
| 4. Village Contacts | 15. News from our MP
News from our County Councillor
News from our District Councillors |
| 5. News from Madingley Village Hall
Appeal for PPE | 16. Royal Mail collection times
Bin Collections |
| 6. News from Madingley Hall | |
| 7. Madingley Hall Gardens: A Cambridge
Rhapsody in Blue | |
| 10. Madingley this Spring | |

FROM THE EDITORS

Welcome to the Summer 2020 issue of *Madingley News*. We normally report recent and future activities in and around the Village, but since our March edition appeared the world has changed and what we must now reflect is Madingley in lockdown. We hope that our news-sheets, circulated around the Village in March and April by our faithful delivery team, were helpful in relaying Government and NHS advice, information on food deliveries, and contributions from the Rev'd Christine Barrow.

The next issue of *Madingley News* will be published on 10th September 2020 and the copy deadline for receipt of articles, photographs (jpeg attachments of 1MB or more in size please) and advertisements is 10th August. We look forward to receiving your news and illustrations.

Roger and Lesley Buckley – email: madingley.newsletter@gmail.com – telephone: 01954 211276

MADINGLEY PARISH COUNCIL NOTES



Charles Crichton-Stuart

Lockdown

Like everyone, the Parish Council has needed to adapt to meet the challenges of the current lockdown. To date all urgent actions seem to have been adequately handled through a range of workarounds. Unfortunately, due to the lockdown, the Parish Council meeting which had been scheduled for March did not happen. May's meeting was held via Zoom but it is our intention to return to the usual format as soon as it is deemed safe to do so.

We are enormously grateful to Roger and Lesley for the production and delivery of COVID-related news-sheets which we hope you all found useful.

Volunteers

I should also like to publicly thank those individuals who have volunteered to provide emergency assistance should it be required by any members on the Parish. If any other people in the Parish feel that they too might now be in a position to provide emergency assistance should it be required, please send your details to the Parish Council Clerk

at clerk@madingleyparishcouncil.org.uk

Special Villagers

The Parish Council, through its hard-working

Clerk, has been in direct contact with everyone in the Parish identified as falling into the highest risk categories. Although immediate coordination of emergency support is managed locally through the Parish Council we are, behind the scenes, part of the Cambridgeshire COVID-19 Coordination Hub. Further details of that can be found on the County Council Website at: www.cambridgeshire.gov.uk/coordinationhub

Parish Councillors

For everyone who would like to keep Madingley as an independent Parish I would once again ask that you consider volunteering to become a Parish Councillor. This is a purely voluntary position with no remuneration but the time obligation is not onerous and the risk of our Parish being subsumed into another remains very real.

Charles Crichton-Stuart

Chairman, Madingley Parish Council

The next meetings of the Parish Council are:

Wednesday 15th July at 7.30pm

Wednesday 16th September at 7.30pm

These will probably be virtual meetings conducted via Zoom. To join either meeting, please contact the Parish Council Clerk (email address above).

COMMUNITY SPEEDWATCH



Community Speedwatch surveys have been on hold due to on-going COVID-19 restrictions. The reduction in through-traffic during lockdown is a welcome relief to most of us. Meantime, national news and local social media reports indicate the police are dealing effectively with speeding and other vehicle-related offences.

Speedwatch Secretariat

CHURCH NEWS

It feels as if a lifetime has passed since we were reading the last edition of *Madingley News*. Little did we realise at that point what the next few months would hold for us. The church went through a rapidly escalating series of regulations for ensuring that strict hygiene rules were followed before, during and after services, until all too soon the building was closed to the public completely. Since then, church leaders, including the clergy, have been revealing a remarkable degree of competence with modern technology, as many of them live-streamed services from their own studies. Those of us, like Susan and me, with more cramped living arrangements, and less equipment, have produced documents each week which are emailed out to members of the congregation containing the service for the week, which we all follow from the safety of our own homes at the time when we would normally be in church. It is quite remarkable how the sense of community is being maintained and supported through this means. Anyone who would like a copy of these services can receive one by contacting Sue Baldwin at: secretary@madingleychurch.org

Welcome

We were extremely fortunate that the interview process for the next incumbent of Girton and Madingley was carried out just in time before the lockdown came into existence. As a result, we are delighted to announce that the Rev'd Michael David Bigg has been appointed Rector of Girton, and Rector of Madingley. He comes to us from a group of three rural parishes near Grafham Water, the East Leightonstone Benefice where he has served his curacy. There is one small problem, in that the present situation with the lockdown means that his move here may well be delayed until the early Autumn, but at least we have the assurance that an appointment has been made, and one which we are all delighted with.



Welcome to Madingley: Rev'd Michael Bigg, Kathryn and family

Michael grew up in Cambridge, and went to Durham University where he read theology. Returning to this area he taught RE, becoming

Head of Department at Comberton Village College. He met Kathryn there, who became his wife, and they have three little boys, Matthew six, Thomas four and Joseph two. We are looking forward to him heading up the ministry team, and encouraging our exploration of the gifts God has given each and every one of us for the benefit of the rest of the congregation, and for the wider community.

West End Development

Our celebration of Michael's institution and induction into the parishes is delayed unfortunately, just as our widening use of the new West End Development facilities has been. A project which began in November 2012, just after I had been licensed to Madingley, but which had been under discussion for many years before that, had finally become a reality, and one of which I think we are justly proud, and for which we are enormously thankful to all those who have supported it so generously.



The west end of the nave, showing (left to right) servery, relocated organ, new vestry with its new curtain, handcrafted by our Churchwarden Jo Wallace-Hadrill, and tea preparation unit

As is often the case, it was the hidden parts of the project, the provision of a water supply and the foul drainage, which caused the most headaches, and by far the greatest part of the expense, but you can't dig through churchyards without having to deal with many groups of people who each have an interest in the process and make demands which affect both the timing and the cost of the project.

Maintenance

In the meantime, the rest of the church fabric has had to be maintained, and I am grateful to Sue Baldwin for the following report. "In parallel with the WEDP, urgent works to keep the elements out of the building, tree works in the churchyard, conservation of the 'Charity and Justice' window and a roof alarm installation have all been accomplished. Window cleaning and repairs have been undertaken, including at high level,

and the building is now filled with light. Scaffolding on the building has enabled Ashley Courtney, the Church Architect, to inspect parts of the structure that have been inaccessible for many years and it is clear that the nave parapet requires some serious restoration work. Ashley will be carrying out a full survey of the building this year which will include a complete overview of the condition of the fabric.

Responsibility

"Throughout we have been very aware of our responsibilities in caring for this precious building and we have seen tangible evidence of those whose lives have been intertwined with it in previous centuries from Rev'd Whytehead, whose bookplate dated 1892 was found tucked under the eaves of the chancel, to the tantalisingly small pockets of evidence from much earlier times discovered by archaeologist Dr Oscar Aldred. We have been hugely thankful that R.J. Pinnock and Sons and Hibbitt Masonry, the two Main Contractors involved in the various works, have shown such care and skill in the work they have undertaken. It is good to see a new generation of craftsmen so capable of caring for these precious buildings going forward into the future.

"Of course, the plans for the dedication of the West End Development Project have been put on hold until such time as churches reopen but we eagerly look forward to inviting you back into the church to see what has been achieved and take part in the activities that will now be possible."

Time to reassess

As the improving weather and the increasingly encouraging statistical reports about the control of COVID-19 help to keep our spirits up, I am sure we are all looking forward to the next phase of life, both in and outside the church. It has given us an opportunity to reassess what is important to us; all we have to do is to ensure that we don't forget this time and the things we have come to realise, once it is all over.

With my prayers for the safety and protection of us all.

Rev'd Christine Barrow

The Editors have tried in good faith to establish the accuracy of the material used, including images, in this Newsletter. Any breaches of copyright are unintentional and are regretted.

Correction: Suzie Harrison has asked us to correct her error in the American Cemetery piece for the March issue. The USA entered the War 18 (not six) months after General de Gaulle's June 1940 BBC radio broadcast. *The Editors*

VILLAGE CONTACTS

Coton School	01954 210339
County Councillor Lina Nieto	07402 351821
District Councillors (Girton Ward) Tom Bygott Douglas de Lacey	07765 475513 01223 565219
Madingley History Group Sue Baldwin	01954 210766
Perse Pre-prep School	01954 210309
Neighbourhood Watch Chris Baldwin	01954 210766
Madingley Parish Church website http://www.madingleychurch.org	
Rev'd Christine Barrow	01223 575089
Parish Churchwardens Elizabeth Seale Jo Wallace-Hadrill	01223 352240 01954 488428
Church Secretary Sue Baldwin	01954 210766
Parish Councillors Charles Crichton-Stuart/Chairman: chair@madingleyparishcouncil.org.uk Fiona Naughton/Vice-Chair: cllr.naughton@madingleyparishcouncil.org.uk Joan Stevenson-Hinde: cllr.stevenson-hinde@madingleyparishcouncil.org.uk	
Parish Council Clerk Sarah Etherington-Meech clerk@madingleyparishcouncil.org.uk	07594 621570
Madingley Parish website http://www.madingleyparishcouncil.org.uk	
Village Hall Committee Chris Baldwin	01954 210766
Police Emergency Non-Emergency Crime Stoppers Community Officer (PCSO 7239 Leanne Fisher)	999 101 0800 555111 101
Sports & Social Club Mark Carter	07718 762230
Cricket Club Philip Done madingleycc@gmail.com	07929 772082
Madingley Toad Rescue William Seale	01223 316561
Village Newsletter Roger & Lesley Buckley madingley.newsletter@gmail.com	01954 211276

MADINGLEY VILLAGE HALL

As I write this, my family is two-thirds of the way into an extraordinary 12-week period of self-isolation and the country is in lockdown. The whole ethos of the Village Hall is based on social activity whether a birthday party, Village meeting, school gymnastics, mother and toddler groups or the Sports & Social Club meeting up at the weekends and, of course, none of this is now possible. It is only nine short weeks since the Hall was enjoying one of the busiest chapters in its life with up to three separate hires taking place in one day. Now the door is firmly locked.

The Government has generously helped the community at large by furloughing workers and awarding individual business grants. Village Halls are eligible under that heading and we have been given a grant which is designed to compensate for the inevitable loss of income during the closure period. It will help the Trustees to ring-fence money put aside for repairs and building costs and enable us to avoid financial penalties until we are open. We are very grateful for this assistance.

We were very sorry to have to postpone the annual Village Quiz, Big Breakfast and Dawn Chorus events but look forward to being able to reschedule these in due course.



Celebrating HM the Queen's Diamond Jubilee in 2012

It is likely to be quite some way off until the Village Hall, which will be classified as a non-essential activity, can be safely reopened to our many users in and around Madingley. Until then our best wishes to all of you, who both use and support this community facility.

Chris Baldwin

Chairman, Madingley Village Hall Trust

RON MARTIN

The Village Hall Committee would like to take this opportunity to send Ron Martin its very best wishes on the occasion of his 90th birthday in

July. Ron moved to the Village in 1948 and has lived in Church Lane since 1950. In 1953 he was called up for National Service and served with the Royal Army Ordinance Corps in Malaysia. He has been a lynchpin of the Village Cricket and Sports & Social Club, being a founding member of the Cricket Club in 1957 (Secretary to 1982) and also of the Sports & Social Club in 1974. In 1964 he was the main Architect in the erection of the cricket pavilion which was purchased from Queens' College (see photograph). Ron has been made an honorary member of both the Cricket Club and the Sports & Social Club. We wish him a very Happy Birthday!



Building Madingley Cricket Pavilion
(left to right: in the background, Graham Johnson, George Newell, Steven Naylor; in the foreground, Ron Martin and Dennis Harvey)

APPEAL FOR PERSONAL PROTECTIVE EQUIPMENT

Mike Brooks, Forcewide Watch Coordination Officer, Cambridgeshire Constabulary writes:

'Everyone will have seen media reports on the availability of PPE. I'm currently working on sourcing stocks of donations of PPE, particularly disposable face masks, gloves and wipes. If you or family members work for companies that may well be closed and have any stocks of these items, however small, that could be released for front line emergency services staff to use, it would be very much appreciated. I would happily collect these across the county.

'Alternatively, if you would prefer me to make contact with any companies that you know use these items, please send me their contact details and I will follow this up.'

Mobile 07738 348554

Mike.brooks@cambs.pnn.police.uk



Photograph: Chris Baldwin

It's certainly been a hectic period since we were forced to close our doors to our students and the general public on 19th March due to COVID-19. Whilst the daily classes, conferences and events which normally take place at the Hall are paused, my colleagues have been working at a frenetic pace to respond to our changing context. If you would like to keep abreast of the latest updates about Hall access, please visit <http://www.ice.cam.ac.uk/coronavirus>.

Our agreement to provide accommodation to key workers during the peak outbreak came to an end on 30th April, after a highly successful five-week operation. It was a privilege to support these essential workers to undertake their roles. Our guests have now moved into self-catering apartments due to the need for more suitable longer-term accommodation. Public Health England guidance was followed for the duration of the operation, and South Cambridgeshire District Council Environmental Health Officers have since been consulted in the run up to our new home delivery and takeaway operation – see page 7 for more information.

For those of you who are missing our gardens, the Institute continues to follow guidance from the Government and the University regarding the opening of private spaces. As a result, the current measures remain in place until we receive further guidance. We will let you know as soon as you can once again access our grounds.

Teaching

We are missing seeing our students face-to-face but we are continuing to deliver a significant amount of teaching, albeit over Zoom!

As ever, we are continuing to deliver our portfolio of fully online courses. Sign up to benefit from peer-to-peer support, engage in stimulating discussion and join our worldwide community of

learners, all from your own home. Courses range from coaching and forensic science to creative writing and Greek mythology. View our full offering at <http://www.ice.cam.ac.uk/online>. We have also moved a selection of our short courses to remote teaching formats, at a significantly reduced cost. Take a look at our exciting range of courses at www.ice.cam.ac.uk/short-courses.

Virtual events

Not only have we moved our teaching to remote formats, but we have also developed an exciting programme of free virtual events and online content. From our virtual Open Days (12th and 13th June) and topical talk webinar series to our bitesize lecture library, we're delivering a combination of live and pre-recorded content across all of our subjects. 'Meet' our tutors, learn something new, get your questions answered and discover what it's like to be part of our community. Find out more and register online at <http://www.ice.cam.ac.uk/events/virtual-events>.

We also invite you to join us at our virtual Summer Festival of Learning. The festival will feature a range of online events such as webinars, taster talks, plenary lectures and week-long courses as well as community events. Teaching will be delivered by Cambridge academics and other invited experts. Find out more and register at <http://www.ice.cam.ac.uk/virtualsummer>.

We look forward to welcoming you back to Madingley Hall in the future but in the meantime, we hope you stay safe and look forward to seeing you at one of our upcoming courses or virtual events.

Dr James Gazzard

Director of Continuing Education
University of Cambridge Institute of Continuing Education

GET MEALS AND FRESH PRODUCE DELIVERED TO YOUR DOOR

Madingley Hall has launched a new home delivery service for food hampers and takeaway.

Food Hampers

Enjoy one of our delicious pre-made meals, a food hamper or a collection of wines or beers from our cellar. Choose from nine hampers including a basic fruit or vegetable pack, a dairy pack, and even a BBQ pack for those sunnier evenings! Delivery is available on a Monday, Wednesday and Friday.



Takeaway

Why not take a night off cooking and order from our takeaway menu? We're offering a selection of our most popular dishes including our signature beef burger, battered cod and chips and pizza. Delivery is available from Thursday to Sunday evenings, between 5.30 and 8.30pm.

South Cambridgeshire District Council Environmental Health Officers have been consulted on safety protocols put in place by Madingley Hall. Contact-free collection and delivery is available to Madingley, Hardwick, Coton, Dry Drayton, Bar Hill, Willingham, Northstowe, Longstanton, Oakington, Cottenham, Comberton and Bourn.

For more information and to see what's on the menus, please visit www.madingleyhall.co.uk/home-delivery-service.

To place your order, email reservations@madingleyhall.co.uk or call 01223 746468.

A CAMBRIDGE RHAPSODY IN BLUE

Madingley Hall Gardens are currently closed due to the COVID-19 pandemic. This article by Head Gardener **Richard Gant** leads us on a themed walk in the Walled Garden to discover plants, the colour of whose flowers is Cambridge Blue.

As we contemplate and adjust to a new rhythm of life, the words 'forget-me-not' are especially

relevant. *Myosotis spp.* cheerfully flowers as the natural world continues its progress from Spring into Summer. *Hyacinthoides non-scripta*, bluebell, the woodland beacon of April and May has painted the woodland floor with a sheen of violet blue. Some weeks ago, the University illuminated the Senate House in blue in recognition of the NHS workers. According to the Cambridge Music Handbooks, George Gershwin's 1924 composition in the title established his reputation as a serious composer.

Origin

I find the colour of Cambridge Blue a brighter and more optimistic shade than the darker blue of the 'other place' with which we share the combined term Oxbridge. The origin dates to the second boat race of 1836 with three of the eight from Gonville & Caius College. It is said that, on winning by 20 lengths, they asked for a light blue ribbon, the colour of their boat club. "The nearest haberdashers only had Eton Blue, which was purchased and used." (Ref 1). Subsequently, the University Boat Club adopted the colour. This blue fits within the Spring green colours of the colour wheel.

Walled Garden

Identifying plants which grace this colour is a challenge and very open to debate. The Dart Border in the Walled Garden is currently being renovated in phases, the south end in 2019 and the north end in 2020. For many years this border has included light blue flowering plants and this theme is continuing. The season commences with *Iris 'Cantab'*, a dwarf rhizomatous perennial with flowers consisting of soft pale blue standards, the falls a deeper blue with white stripes and a yellow blotch. *Pulmonaria Opal* = '*Ocupol*' has a semi-evergreen, blotched foliage speckled with silver and clear blue flowers. *Pulmonaria officinalis*, lungwort, grows in the Medicinal Border opposite. Its name comes from the Latin pulmo (lung) as the silver markings on the leaves were thought to resemble diseased, ulcerated lungs hence its use for treating lung infections. If only this association had been proved and was able to help resolve the current health situation. The Greek physician and botanist, Dioscorides (C 40-90 AD) was an early practitioner exploring the visual resemblance of a plant and a human organ, commonly referred to as the Doctrine of Signatures.

Veronica gentianoides, gentian speedwell from the Caucasus is a delightful Spring flower, suitable for the front of the border. It forms a base of glossy dark green foliage, with light blue flowers on erect stems to 450mm. It has a light

airy touch; Beth Chatto, the plant doyen, describes “the pale washed-blue flowers”. (Ref 2). Iris ‘Jane Phillips’ is one of my favourites; Beth Chatto rightly says “deservedly popular” and “the flowers possessing well-shaped standards, softly ruffled falls in clear azure-blue with white beard”. This tall Bearded Iris was bred by Dr. John Graves (1878-1950) a prominent physician and surgeon who graduated from Harvard College School of Medicine and practised at Concord in New Hampshire. With a love of gardening, he started Iris hybridizing in 1931, raising ‘Jane



Iris ‘Jane Phillips’ (Langthorns Plantery)

Phillips’ which flowered for the first time in 1946. It received both the Award of Garden Merit from the Royal Horticultural Society and the American Iris Society of which he became Vice President. One parent, Iris ‘Helen McGregor’, is named after his wife. He was fascinated by blue and white forms. The National Trust publication of 2004 describes Jane Phillips in these words: ‘Much of the success is the pure blueness of the flower, which soft, yet clear in tone and not suffused with the same extent of lilac as many other ‘blue’ varieties. Both the standards and the falls are elegantly veined, giving the characteristic crepe paper effect and the strong and detailed pale vanilla-white beard is immediately eye-catching.’ (Ref 3).

A Cherokee remedy

Another herbaceous perennial from Eastern North America is *Baptisia australis*, false indigo. It grows both in the Dart Border and the Dye Border. *B. australis* ‘*Exaltata*’ is considered a more upright form. The Greek ‘bapto’, meaning to dip or immerse and the common name false indigo refers to its use as a dye substitute for *Indigofera tinctoria*, true indigo. The sap from cut or bruised stems turns dark blue when exposed to the air. The pea-like, light blue flowers are lit

up by the light grey-green trifoliate foliage. The Cherokees used the roots as a tea for a purgative and for toothache and nausea.



Amsonia orientalis (Langthorns Plantery)

The Genus *Amsonia*, eastern blue star, is named after the English physician and amateur botanist John Amson. He moved to Williamsburg, Virginia and in 1750-1751 was Alderman and Mayor. Amson treated General George Washington during the French and Indian War. Thought to have tuberculosis, Amson advised the General he had but a common cold! In 1760, the Genus *Amsonia* was named after him. *Amsonia tabernaemontana* is native to the USA and grows to one metre; *A. orientalis* is lower growing, the only member of the genus native to Europe originating from Turkey and Greece. Both display starry, light blue flowers in the Spring.

Eritrichium pectinatum, a low growing forget-me-not from Siberia to the central Ural mountains in Russia grows on the raised Alpine Bed. The combination of the many bright light blue flowers each only 5mm wide, stand out amongst the other alpine.

Coffee substitute



Cichorium intybus (Langthorns Plantery)

Cichorium intybus, chicory, a native of West Asia, North Africa and Europe is naturalised in the UK. It has loosely branched stems (up to 1-1.5m) with toothed leaves and clear sky-blue flowers which open in sunlight but close in rain. For centuries, it has been used as a coffee substitute and as an ingredient in coffee cakes and other confectionery. Cultivated forms can be eaten raw.

Old and new

Here at Madingley we always attempt to grow established proven heritage plants intermixed with the new. *Clematis integrifolia* 'Twinkle' is a new herbaceous type which can be staked or allowed to ramble in the border. The edge of the petals have a 'twist' and a 'drop of light blue on the top of the flower, fading to the tops' (Ref 4).



Clematis integrifolia 'Twinkle' (Taylors Clematis)

Agapanthus

In the height of Summer into early Autumn, there is no more glorious a sight than a drift of the light blue *Agapanthus* 'Headbourne hybrids', the perennial, clump-forming South African lily. On Tresco, Isles of Scilly it has escaped onto the dunes in abundant swathes. It requires a warm sheltered environment and is effective in pots. The upright flowering umbels extend to one metre. *Convolvulus sabatius*, blue rock bindweed is not the pernicious weed as the common name may suggest. The Frustrated Gardener refers to it as 'an extremely polite customer' (Ref 5). A delightful low growing spreading plant which enjoys its position at the front of the border, like its native environs of Italy and North Africa. The single light blue flowers have creases delighting the garden scene from Summer onwards.

Conclusion

'Blue flower' was a central symbol of inspiration for the Romanticism movement and remains an enduring motif in western art today. It stands for desire, love and the metaphysical striving for the



Agapanthus 'Headbourne hybrids' and *Echinops ritro* 'Veitch's Blue' growing at Madingley (Colm Sheppard)

infinite and 'unreachable'. It symbolises 'hope and the beauty of things' (Ref 6). I trust the plants featured reflect their beauty and this article offers hope. We look forward to welcoming you back to Madingley before too long to witness and see these plants befitting of a Cambridge Blue.

The plants exemplify the diversity and range of those grown at ICE Madingley Hall. They reflect the Institute's international philosophy, offering access to everyone from anywhere in the world. This article mirrors the subject range offered – Art History, Botany, Creative Writing, History, Literature, Medicine and Science:

<http://www.ice.cam.ac.uk/>

Richard Gant

Head Gardener
Madingley Hall

To source the plants and to support the specialist nurseries who grow and conserve them, the charity Plant Heritage has a dedicated page on how to find them:

<https://www.plantheritage.org.uk/news/supporting-national-collection-holders-think-local/>

References:

1. Gonville & Caius College Fellow Dr. Mark Wood, letter to Daily Telegraph, December 2019.
Gonville & Caius Boat Club:
<https://www.cai.cam.ac.uk/living-here/sport/rowing-caius>
2. Beth Chatto's Plants and Gardens:
<https://www.bethchatto.co.uk/>
3. James Parry, Irises, National Trust, 2004, ISBN 1-905400-03-9
4. Taylors Clematis:
<https://www.taylorsclematis.co.uk/Twinkle.html>
5. Frustrated Gardener
<https://frustratedgardener.com/2015/06/21/daily-flower-candy-convolvulus-sabatius/>
6. Blue Flower
https://en.wikipedia.org/wiki/Blue_flower

MADINGLEY THIS SPRING

The appearance of a new Canada Goose family on the Lower Lake of the Hall has inspired several Village photographers, as has the glorious Spring and the Village in lockdown.



Emma Robinson



Hannah Nunn



Hannah Nunn



Chris Baldwin



Spring lambs

Heather Robinson



May blossom in the 800 Wood



The A428 without traffic



Madingley Hall gates locked

Chris Baldwin



Cowslips

Catherine Slack



Madingley Hall: the view to the east, as envisaged in 1756 by 'Capability' Brown

Chris Baldwin

NEWS FROM THE AMERICAN CEMETERY

VE 75 and Memorial Day 2020

May 2020 should have been the month when Cambridge American Cemetery was to have marked two major events. One was to have been the 75th anniversary of Victory in Europe Day on Friday 8th May. The other was to have been the annual tribute to those young Americans who died for their country and who remain buried in British soil.

Given global events, unfortunately, neither of these were able to take place. However, ABMC will continue to remember a generation of Americans who put their hopes and dreams on hold to answer their nation's call. They travelled to Britain and beyond, joining the Allied fight against tyranny.

Remembering

As the Cemetery is currently closed, there were no visitors to see the bluebells. The grass still grows and some work carries on in the grounds, although at a reduced level of care and maintenance. In this way, Cemetery staff continue to care for the final resting place of those who gave their today, for our tomorrow.

*When you go home, tell them of us and say
For your tomorrow, we gave our today.*

(Kohima Epitaph – John Maxwell Edmunds, 1916)

Whenever someone dies, they leave an empty place at the table. How much more so than when young men and women make the ultimate sacrifice for the lives we now lead.



S2C Jake Gambrel, USNR – died aged 17 years on 28th April 1944, while taking part in Exercise Tiger at Slapton Sands, Devon (F-1-5)



Headstone for Jake Gambrel, American Cemetery

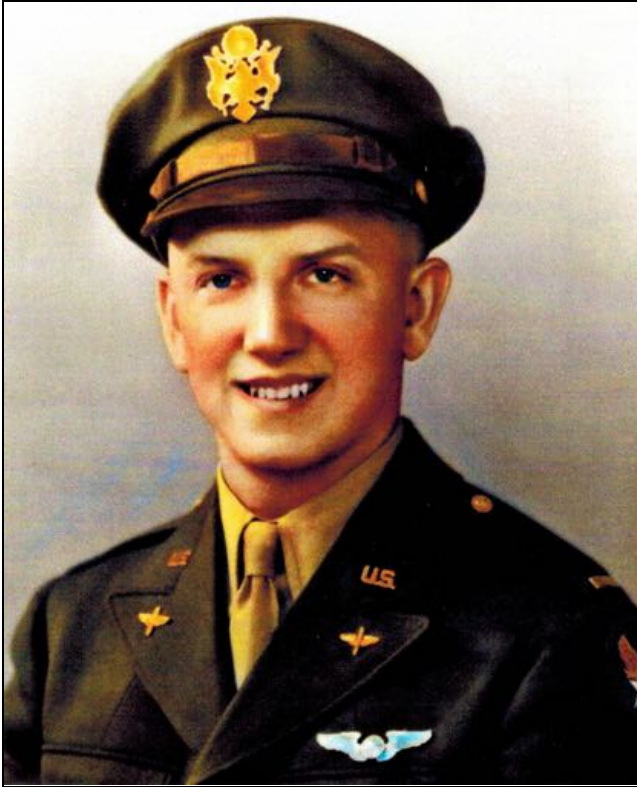
Today, many of our visitors are young themselves; coming to pay homage to someone of whom they have only heard stories.

People such as the nephew of 2nd Lt. Victor C Thoendel, 96th Bomb Group (Wall of the Missing), B-17 Flying Fortress navigator, who died with his comrades when their burning aircraft crashed into the sea off Lorient, France on 23rd September 1943. The nephew described how Victor came to say good-bye to his older brother, who was working their cornfields, prior to departing for the war. Victor climbed on to the tractor, as if to burn the image of home into his minds-eye for the last time, and told his brother who would stay behind to manage their Nebraska farm, that he would '*probably ... never see it again*'.

Or the family, who brought their baby daughter to pay homage to her great, great-uncle, 2nd Lt. Charles L Herzberg.

Baby Fiona's mother said, '*Something about it really touched us – my half American/half German 11-month old daughter at the grave of her great great-uncle, who died fighting on behalf of her mother's country against the country of her birth more than 70 years before she was born. It's incredible.*'

She then sent us this wonderful portrait of her great-uncle Charles.



2nd Lt. Charles L. Herzberg, 92nd Bomb Group, also navigator on a B-17 Flying Fortress, which crashed during take-off on 20th May 1944 (E-4-47)



Baby Fiona at the headstone of her great, great-uncle Charles Hertzberg

Fitting memorial

After World War I, General Pershing revisited the battlefields where his men fought and died. When he saw the temporary cemeteries, he

realised that his soldiers needed a permanent and more fitting memorial, so that, as he wrote, *'Time will not dim the glory of their deeds.'*



General of the Armies John J. Pershing (1860-1948)

Today, the American Battle Monuments Commission keeps alive the memory of the men and women commemorated in these national shrines. We actively research their personal history to preserve their stories and experiences and to keep their sacrifice relevant. Their descendants, who now visit these memorial sites, support our endeavours to gather information. The family anecdotes and photographs add colour to the backgrounds of those we honour. In this way we can better safeguard their story for generations to come, and, in doing this, stay true to Gen. John Pershing's promise.

Families don't forget; neither does ABMC.

Suzie Harrison

American Battle Monuments Commission
Cambridge American Cemetery and Memorial



NEWS FROM THE STEPHEN PERSE PRE-PREP

The Stephen Perse journey of learning, fun and friendship has continued even through lockdown.

Pupils who would usually attend school at Madingley have been continuing their education remotely at home and teachers have been creatively teaching via video, live sessions and children's online learning journals. This has enabled our children to take part in live play sessions with their peers which have been thoroughly enjoyable at a time when more than anything, they have missed meeting and playing with friends.

Social interaction

Successful live and interactive construction activity play dates, maths challenges and tea parties have taken place within class groups of our very youngest pupils for whom social interaction is a key part of learning, despite everyone except our key worker children, being in lockdown at home. Who would have ever thought it? Voyages of discovery of both staff and pupils continue in these very strange times as we adapt to our new normal.

New nursery

In September, we will open a new Stephen Perse Nursery at Madingley, for babies and toddlers from the age of one to three years. The nursery will share the same commitment to play-based learning and development, the same approach to health and nutrition, and the same exceptional level of childcare as the other Stephen Perse Nurseries.

For any interested families in the local community, please go to our website:

<https://www.stephenperse.com/earlyyears> or contact admissions@stephenperse.com

Verity Brownbridge

Deputy Head of Early Years
Stephen Perse Foundation

MADINGLEY CRICKET CLUB

As I am sure you can imagine it has been a very frustrating time to be a cricketer; similarly to everyone we would like to be out enjoying the good weather and playing the game we love. The lockdown was introduced just as we were starting regular nets, and since then no practice has been possible. We can now practise in pairs where facilities are available, and it seems as though larger groups will be allowed soon. However the latest ECB guidance is that domestic cricket will not take place before August, and recreational cricket is still not permitted. So in all likelihood there will be no league cricket this

year. There is a will amongst some local clubs to hold some friendly games when we can, even if that is not until September. I am keeping fingers crossed that we get some action this year, even if it is limited.

In the absence of on-field action we have entertained ourselves with a virtual 'timeless Test' organised by Ian (some would call it never-ending; the action took place over two weeks!), Roger hosted a WhatsApp quiz (and owes me a beer as winner!) and made a video compilation for Chalky's 40th birthday. There has also been plenty of reminiscing over the 'good old days' with Martin sharing some old versions of the club magazine from the 2000s. So I am glad to say that spirits are good, and we can't wait to get playing again at the earliest opportunity.

Please feel free to contact me if you would like to know more about the club. We are always happy to hear from people who love their cricket!

website <http://madingley.play-cricket.com/> and Facebook

page <https://www.facebook.com/madingleycc/>

Philip Done
Secretary

RAISING FUNDS FOR UGANDA

Recently, Reuben Nunn set himself the challenge of spending 12 hours in a hammock to raise money to support his friends in Uganda who are struggling to get adequate nutrition due to the strict lockdown – and raised £800.

Reuben's Mum, Hannah, said: "As a family we are privileged to support Early Learning School, Entebbe which cares for orphaned and vulnerable children, providing them with safe housing, education and food. Food in Uganda is currently very expensive so the money Reuben raised will ensure that the children have adequate food for the coming months. We are looking forward to returning to the school once the lockdown in the world has been lifted."



NEWS FROM OUR MP, ANTHONY BROWNE



As I write, we have passed the peak. There is much still to do, but it is heartening to look into the future with optimism once again. Across South Cambridgeshire, I have seen the very best of Britain; a community working together to safeguard the vulnerable and support each other. I want to thank everyone who has contributed to this effort. Due to your hard work and sacrifice, we can look beyond this pandemic. Now, it's time to start on a long and responsible road to recovery – where possible, resuming our lives, reopening our businesses and, in time, returning to schools.

This month, I have hosted video calls and written to all headteachers in our area, discussing the challenges of providing education during lockdown and preparing for wider reopening.

It's clear that reopening schools will be challenging. The new arrangements will require a significant shift in the way schools organise their physical space and how the staff and children interact with each other during the school day.

I have passed the head teachers' comments on to education ministers for feedback and will continue to work with education leaders to support them as they reopen our schools.

As the Government looks to reduce lockdown measures, I will also be working hard to get our local economy moving again. Standing up for local businesses, such as pub tenants in need of rent or retailers in need of clear guidance on re-opening, remains a priority of mine.

I am committed to supporting all in South Cambridgeshire through the next few months, providing answers to any questions you may have and tackling your issues as they arise.

As a country, a constituency and a community, we are getting through this. So please, stay alert, control the virus, and in doing so, save lives.

As ever, please don't hesitate to reach out if you think I can help. You can reach me at anthony.browne.mp@parliament.uk.

Anthony Browne MP

NEWS FROM OUR COUNTY COUNCILLOR, LINA NIETO



This country is going through an unprecedented situation. I have been blown away by the response from people I have never spoken to, never met, who didn't know me or others but made a conscious decision to take action.

However, we cannot forget all those volunteers who before this epidemic were already dedicated to improving their community and looking after their residents. Yes, I am talking about Parish Councillors. Many people do not know of their existence and yet their communities wouldn't be what they are without them.

I just want to say a massive 'Thank You' to all the active and silent daily heroes that live within our communities and that make our communities a great place to live and work.

Lina Nieto

Mobile: 07402 351821

E-mail: Lina.Nieto@Cambridgeshire.gov.uk

Facebook:

<https://www.facebook.com/CllrLinaNieto/>

NEWS FROM OUR DISTRICT COUNCILLOR, TOM BYGOTT



Cllr Tom Bygott

Coronavirus pandemic

Stay alert – it is important to take sensible precautions, neither panicking nor being complacent; being 'alert but not alarmed'. Follow official advice which is constantly being updated:

Be kind

The elderly are the most vulnerable group, and looking after elderly relatives, friends and neighbours should be our priority. Making sure that they have enough groceries and telephoning regularly to ensure that they don't feel lonely are two ways that younger people can help.

£100k homes initiative

The Cambridgeshire and Peterborough Combined Authority has developed a £100k Homes initiative. It will create one-bedroom homes available to buy at £100,000, with the first expected later in 2020. These will offer an affordable step on the property ladder for people who live or work in Cambridgeshire and Peterborough.

A new website has been launched, www.100khomes.co.uk, which explains the initiative and allows the public to register their interest for £100k homes when they become available to buy.

Undemocratic planning arrangements

South Cambridgeshire District Council is facing strong opposition to a new scheme of planning delegation which it adopted at its Council Meeting on 21st May. Planning delegation is the system by which decisions are taken as to which planning applications will be decided by the Council's Planning Committee, made up of (currently 11) elected councillors, and those which are delegated to Planning Officers to decide.

I support a system in which a Parish Council or a Councillor can call a planning application in to the Planning Committee if their view of the matter differs from that of Planning Officers. The most controversial matters should be decided by a large group of people who are directly accountable to residents for their actions. No one person or group of people has a monopoly on the truth, and none of us are infallible. My group proposed an amendment to this effect but were defeated along party lines at the meeting.

In the new scheme that has been adopted, a single member of the Council's staff will have the final decision on which applications are to be determined by the Planning Committee. This is not a democratic way of operating and could lead to the views of local residents and Parish Councils being ignored.

Cllr Tom Bygott

cllr@bygott.net
07765 475 513

NEWS FROM OUR DISTRICT COUNCILLOR, DOUGLAS DE LACEY



Cllr Douglas de Lacey

This report should have started with the word 'Farewell'. I had fully intended that at the May Annual Meeting of the Council, having handed over the Chair to my successor, I would announce my resignation from the Council.

There were many reasons for this: my wife is not well and needs my attention; I have achieved most of what led me to be a Councillor; I had identified someone who would stand as my successor and be very able to represent the Ward. But the Government has abolished both Annual Meetings (at which I could resign) and elections (at which I could be replaced).

So the Leader has persuaded me that this is not the time for major changes, and I shall stay on as long as I can until the lockdown is lifted. I also remain as Chairman to the Council and hope that I can lead the Council into the strange new world of remote meetings. To this end I have had some intensive training in the use of MS Teams. Because of family circumstances I shall not be able to commit myself 100% but shall do all I can.

Helping businesses

As a District Council we have received and disbursed significant sums of money to local businesses, all of whom should now have heard from us; and we are grateful to our MP Anthony Browne for his lobbying of the Government on our behalf. It is disappointing that some local businesses do not meet the criteria but we are hopeful that they too can be helped somehow.

Travelling by bus

Stagecoach has announced that its bus drivers will no longer handle change, and passengers must therefore offer the exact fare or forfeit the difference (which will be donated to good causes). From my observation social distancing is not a problem on the Citi 5 and 6 services but do protect yourself if travelling.

Cllr Douglas de Lacey

01223 565219
cllr.delacey@scambs.gov.uk

Join the village community:

facebook.com/madingleyvillage

To offer or request support
& stay connected

ROYAL MAIL COLLECTION TIMES

From the small box near No. 31, High Street
Monday to Friday: 4.15pm
Saturday: 11.45am

From the pillar box near Madingley Hall gates
Monday to Friday: 9.00am
Saturday: 7.00am

From Monday to Friday, a later collection (7.00pm) is made from Cambridge Mail Centre, Clifton Road, Cambridge CB1 7AJ

'WEDNESDAY B' BIN COLLECTIONS

June

3rd:	BLUE
10th:	BLACK
17th	BLUE and GREEN
24th	BLACK

July

1st	BLUE
8th	BLACK
15th	BLUE and GREEN
22nd	BLACK
29th	BLUE

August

5th	BLACK
12th	BLUE and GREEN
19th	BLACK
26th	BLUE

Advice from South Cambridgeshire District Council on Green Bin collections:

'Put your green bin out every fortnight. We guarantee to empty your green bin every four weeks, but please put it out every fortnight and we'll empty it if we can.'

Email info@angliarhearing.co.uk

AN INDEPENDENT AUDIOLOGY CLINIC BASED IN CAMBRIDGE

Hearing Tests

Free Hearing Tests
Detailed Hearing Assessments
Most Up-To-Date Testing Methods

Hearing Aids

Get a hearing aid in a matter of days.
Free 30-day no-obligation trial

Ear Wax Removal

Micro-suction • Irrigation • Video Gloscope

Tinnitus Treatment

Fast appointments. Many treatment options
Member of British Tinnitus Assoc.



Grain House, Mill Court, Great Shelford, Cambridge. CB22 5LD

BOOK ONLINE! www.angliarhearing.co.uk • Phone 01223 661399

Rothwell's Carpet Cleaning

01223 832 928
www.Rothwells.biz

Carpet Cleaning

Stone Floor, Upholstery & Rug Cleaning.

A few points that make us stand out from the others,

Rothwell's has been in business since 1993.

We're an honest local family firm.

Our large truck mounted machines mean more cleaning
& drying power for the best results possible.

Members of both the NCCA and TACCA.

We will move the furniture for a thorough clean.

100% satisfaction or it's FREE.

Call Oliver or Max Campbell for expert help today.

Rothwell's, Malting End, Kirtling, Newmarket, CB8 9HH



Get out and about and save money with PANTHER TAXIS

Did you know that we now offer a **REDUCED RATE**
village to village service to or from **YOUR VILLAGE?**



**Only pay
door to door
not a penny
more**

Find out how much
you can **SAVE** by
downloading our app



With a fleet of over 650 vehicles running
24/7, you know who to call:

01223 715715

www.panthertaxis.co.uk

Prices are fixed based on the Cambridge metered rates
to or from the included villages.

Villages outside of this area may still have a callout fee.

thedesignbranch
TREE CARE & LANDSCAPING



Providing a comprehensive &
professional service in all aspects of
tree care and landscaping

Tree Felling | Dismantling | Height Reduction | Pruning
Reshaping | Thinning | Hedge Trimming & Cutting
Fruit tree pruning | Site Clearance | Landscaping.

Your local Tree Surgeon

I am fully insured and fully NPTC qualified.



If you would like to discuss a particular project, please feel free to call on, Madingley:
T: 01954 211279 M: 07929 064420 E: john@thedesignbranch.co.uk



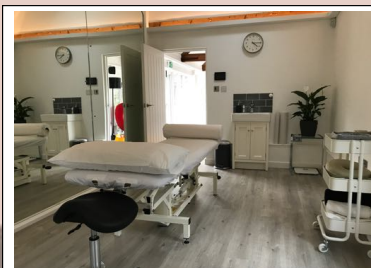
**The
Form
Practice**

www.theformpractice.com
info@theformpractice.com
Main St, Hardwick, CB23 7QS
01954 214473

We are a complementary health practice, hidden away in a peaceful setting in Hardwick.
Located in a beautiful renovated barn with plenty of free parking. Online booking now
available.

- ❖ Osteopathy
- ❖ Massage
- ❖ Pelvic floor & core rehab
- ❖ Hypnotherapy
- ❖ Bio Energetic Medicine

- ❖ Fully equipped pilates studio
- ❖ Fitness & pilates classes(max 6)
- ❖ Personal training
- ❖ Yoga



Vintage travel

ESTABLISHED
1990

Your Local
Travel
Company



HANDPICKED VILLAS WITH POOLS

A selection of beautiful individual villas
& houses with pools in tranquil settings
& areas of traditional local culture.

Call for a brochure or to speak to one
of our specialists **01954 261431**

or visit our website
www.vintagetravel.co.uk

GREECE • SPAIN • LANZAROTE •
BALEARICS • PORTUGAL • TURKEY •
FRANCE • ITALY • CROATIA



ABTA
ABTA No V5643