



Madingley News

DECEMBER 2021



Holly berries, Madingley Churchyard

Photo: Chris Baldwin

IN THIS ISSUE

- | | |
|---|---|
| 2. Parish Council Notes | 10. News from the American Cemetery |
| 3. Community Speedwatch
Madingley Cricket Club | 12. Our MP, Anthony Browne
News from our County Councillor, Michael Atkins |
| 4. Village Contacts
Church News | 13. News from our District Councillor,
Tom Bygott |
| 5. Madingley Village Hall | 14. News from our District Councillor,
Corinne Garvie |
| 6. National Garden Scheme
CamShed | 15. Bin collections |
| 7. News from Madingley Hall | 16. Bus times |
| 8. Images of Madingley | |

FROM THE EDITORS

Welcome to the December 2021 issue of *Madingley News* in which we report on past and future activities and developments in our Village. This is our last edition as Editors, a decision taken some months ago, but not lightly, as we have enjoyed being able to share information each quarter, and from residents' kind feedback we know that this has been appreciated by many, particularly during the recent pandemic.

However after seven years and 30 regular issues, plus two 'lock-down news-sheets', we feel it is time for someone else to take over. We are delighted to announce that John and Fiona Naughton have agreed to do this. Their new *Madingley News – a Quarterly Village Newsletter* will be available at no charge, online only, by subscribing at <https://madingleynews.substack.com>

Substack defines itself as 'the place for independent writing' and has been described as 'the standard of the independent journalism industry'.

The email address for submitting content and for communications remains unchanged as madingley.newsletter@gmail.com

It has been a privilege to work with all our contributors over the years, without whom there would not have been a publication, and we are grateful to everyone who has submitted copy, information and photographs. We also thank our loyal advertisers for their support, which has helped in part to fund the printing costs, and our very efficient team of distributors who have braved the elements to ensure that a copy has been delivered to each house in the Village on time. Last but not least, thank you to the Parish Council for entrusting us with this task.

We wish you all a Merry Christmas and a Happy New Year!

Roger and Lesley Buckley – email: madingley.newsletter@gmail.com – telephone: 01954 211276

MADINGLEY PARISH COUNCIL NOTES



Charles Crichton-Stuart

Active Travel Schemes

As outlined in the last Newsletter, Cambridgeshire County Council is considering a range of changes to roads throughout Cambridgeshire to encourage active travel across the area. Two of the proposals were to make both Dry Drayton Road and Cambridge Road one-way for vehicular traffic with segregated cycle lanes. It seems likely now that the Dry Drayton Road plan will not be taken forward. However, a plan for Cambridge Road is still under consideration. The latest proposal is to make it a 'no through road' and prevent exit on to Madingley Road at the Coton junction but not to take any road space for a cycle lane. This

would stop the eastbound rat-run problem, and also significantly reduce traffic on the road to make it more cycle-friendly.

LHI

Each year, groups or organisations that represent local communities are invited to submit proposals for funding from the Local Highways Improvement (LHI) initiative. This fund offers residents the chance to bring forward their own highway improvements within their community. Schemes are delivered by the County Council on a jointly funded basis and applicants are able to ask for funding of up to £15,000 as a contribution to their scheme. The applicant is expected to provide a minimum contribution of 10% of the total scheme cost. In this year's application the Parish Council is seeking to make it less hazardous for pedestrians when crossing Madingley Road by the American Cemetery, by introducing new road signs to properly alert drivers of the crossing. The footpath from Madingley (alongside the US Cemetery) to Coton necessitates crossing Madingley Road and picking up the path further east before emerging by the school. The combination of fast and often frequent traffic, and poor visibility because of bends in the road, make this a difficult and dangerous undertaking for all, but especially for children from Madingley attending Coton School and anyone lacking agility.

A14 Legacy Fund

Final consultation on this scheme should have been completed by the time this edition of *Madingley News* is published. All being well, works are scheduled for delivery in January and will entail: a 40mph 'buffer' zone leading up to the entrance to the Village on The Avenue; a 'chicane' similar to those on Cambridge Road and Church Lane on The Avenue between the entrance to the Village and Dry Drayton Road; and 'Not suitable for HGV' signs at the Coton junction, Madingley Mulch roundabout and The Avenue/A1307 entrances to the Village.

Newsletter

As you are all no doubt aware Roger and Lesley Buckley are now retiring from producing and editing this newsletter. Although I have done so in person, I would once again like to thank them both for volunteering to do this for so long (and for so patiently putting up with my inability to provide this short report by the requested deadline on every issue since I became Chair!). This will be the last *Madingley News* you will receive – but we are delighted that John and Fiona Naughton have kindly suggested to compile a quarterly digital newsletter (please see 'From the Editors' opposite).

Charles Crichton-Stuart

Chairman, Madingley Parish Council

Forthcoming meetings of the Parish Council:

Wednesday 19th January 2022 (please see website for details)

Wednesday 16th March 2022 (TBC)

COMMUNITY SPEEDWATCH



Our Village Speedwatch team has been running short surveys here over the last six years and continues thanks to our team of volunteers. The need for speed surveys here is undiminished, particularly since the opening of the Local Access Road. The main impact of our surveys is to immediately reduce and calm traffic speeds, as the highly visible presence of our team encourages drivers to consider the local speed limit. Similar schemes operate across the County, as well as all over the country.

If you live in Madingley and have concerns about through-traffic speeds, please do consider

volunteering small amounts of time by joining our team. Volunteers must be reliable, aged 18+ and willing to undergo police training to participate. If you can help, please email your expression of interest with your name, address and phone number c/o the Parish Clerk

clerk@madingleyparishcouncil.org.uk with

'Speedwatch' as the subject heading. Your message will then be forwarded to the Speedwatch Coordinator for response.

We're extremely grateful to Roger and Lesley Buckley, Editors of *Madingley News*, for their excellent work, keeping us informed about relevant local news, issues and events throughout 30 issues.

Speedwatch Secretariat

MADINGLEY CRICKET CLUB

A fine season was concluded with three wins from three for each team, and promotion for both from 2nd place in their respective leagues.

The 1s scored 201 against Camden, (El Gato 60) with valuable contributions from new signings Richard and Ben. Vinesh took 3 for 12 and Kaiser 3 for 22 as we won by 90 runs. In the following game Wasim top-scored with 86 in a total of 234 for 3 in only 30 overs; Sanish took 4 for 18 and Hitesh 3 for 31 in a 102 run win against Sutton. The final game against Witcham was controversial as we posted 173 for 9, with 66 from Pradeesh and 57 from Kaiser. We restricted the runs to 6 in the final over, having been told that 8 was required to win, only to find the target revised down by a run after the players left the field. Eventually we were awarded the win after consulting the league.

The 2s made hard work chasing Milton's 119 all out (Javaid 3 for 20), losing 2 wickets with the scores tied before winning on a wide! Our return game against Longstowe avenged a disappointing defeat, and we posted 167 for 5 off 30 overs. After Charlie took 3 for 16 we began conceding too many runs to their pinch hitter, but skipper Kevlar held his nerve to take 1 for 16 off the last over for a 6 run win. Luke scored his maiden century in our final match against Bar Hill, as we posted 245 for 5. Mick then bowled a dream opening spell to reduce them to 5 for 4, and we kept their total to 89.

We welcome players of all abilities, and Winter nets will be starting early in 2022, so please get in touch if you would like to be involved.

Philip Done, Secretary

Madingley Cricket Club

<http://madingley.play-cricket.com/>

<https://www.facebook.com/madingleycc/>

<https://twitter.com/madingleycc>

VILLAGE CONTACTS

Coton School 01954 210339

County Councillor

Michael Atkins matkinslibdem@gmail.com

District Councillors (Girton Ward)

Tom Bygott 07765 475513

Corinne Garvie 07780 932267

Madingley History Group

Sue Baldwin 01954 210766

Stephen Perse Foundation

Nursery 01954 210309

Neighbourhood Watch

Chris Baldwin 01954 210766

Madingley Parish Church website

<http://www.madingleychurch.org>

The Revd Christine Barrow 01223 575089

The Revd Michael Bigg 01954 332040

vicar@madingleychurch.org

Parish Church Wardens

Jo Wallace-Hadrill 01954 488428

Tony Conway 07795 820331

a.l.conway@icloud.com

Church Secretary

Sue Baldwin 01954 210766

Parish Councillors

Charles Crichton-Stuart/Chairman:

chair@madingleyparishcouncil.org.uk

Fiona Naughton/Vice-Chair:

cllr.naughton@madingleyparishcouncil.org.uk

Joan Stevenson-Hinde: cllr.stevenson-hinde@madingleyparishcouncil.org.uk

Victoria Keevil:

cllr.keevil@madingleyparishcouncil.org.uk

Parish Council Clerk

Karen Peck

clerk@madingleyparishcouncil.org.uk

Madingley Parish website

<http://www.madingleyparishcouncil.org.uk>

Village Hall Committee

Chris Baldwin 01954 210766

Police Emergency 999

Crime Stoppers 0800 555111

Community Officer 101

(PCSO 7239 Leanne Fisher)

Cricket Club

Philip Done

madingleycc@gmail.com 07929 772082

Madingley Toad Rescue

William Seale 01223 316561

Village Newsletter

Roger & Lesley Buckley 01954 211276

(to December 2021)

CHURCH NEWS

As we come round to the Christmas season, Madingley Church is getting ready to celebrate the birth of Jesus a bit more fully than we were able to last year.

Most of the normal services will be happening and you are very welcome to join us!

Christmas Services in Madingley 2021

- Sunday 19th December – Christmas Readings and Carols for all the Family with activities for primary-aged children. This service starts at 4pm; there will be no service here that morning. Refreshments will be served afterwards
- Monday 20th December at 11am – Madingley Hall Service of Readings and Carols at the Parish Church – all are welcome to attend
- Friday 24th December – Service of Holy Communion 'Midnight in Bethlehem' conducted by the Rev'd Michael Bigg. Please note this service starts at 9pm
- Saturday 25th December at 10am – Christmas Day Service of Holy Communion for all the Family conducted by the Rev'd Janet Glover
- Sunday 26th December – Service of Holy Communion remembering St Stephen and conducted by the Rev'd Michael Bigg starting at the usual time of 10.30 am

After a challenging time it's reassuring that at Christmas time we're told that 'the light shines in the darkness, and the darkness has not overcome it'. The congregation would love to welcome you to any of the services (or on any Sunday for that matter) as we celebrate the peace that comes of knowing God's presence among us.

In other news, we're glad to report that our much-loved assistant priest, Christine Barrow, is recovering well from her hip replacement. She's taking some time out while she recuperates, but we look forward to seeing her back in action again in January. We've also been very glad to welcome various churches to Madingley for quiet days in our beautiful setting – people seem to appreciate greatly the peaceful setting here.

Specialist restoration companies have been continuing to care for our ancient Parish Church over the Summer and Autumn. Hibbitt Masonry have made repairs to the north wall of the North Aisle and the buttresses at the SW end of the nave. They have replaced broken coping stones on the North Aisle parapet and repaired downpipes and gutters around the building.



Repairs to the SW buttress

Unfortunately, their work to the drain on the south side of the church revealed that the land-drains serving the church to the south-west and north sides of the church have disintegrated. These will be renewed under a separate contract during the Winter months.

You will also have seen Roy Cafferty working on the surrounds to the beautiful north-east window and the entrance to the north porch. These were constructed from 'Roman Cement' – a material that is neither Roman nor cement but a mortar developed in the 18th century. We are extremely fortunate that Roy has both the knowledge and expert skill in this technique so that these parts of the building can be repaired appropriately.

The Rev'd Michael Bigg – Vicar of Madingley

ROYAL MAIL COLLECTION TIMES

From the small box near No. 31, High Street
Monday to Friday: 4.15pm; Saturday: 11.45am
From the pillar box near Madingley Hall gates
Monday to Friday: 9.00am; Saturday: 7.00am



The NE window before restoration



– and afterwards

MADINGLEY VILLAGE HALL

I am pleased to report that we held the AGM **in person** at the Hall in November and that we have a complement of eight trustees for the year ahead.

Over the past year the Hall has been used safely when possible. With all mandatory requirements now relaxed and clear evidence of rising numbers of infections and hospitalisations, the hiring of the Hall is proceeding with some caution. All PPE facilities have been maintained and remain in the Hall and their use is optional.

Educational/wellbeing events are limited to 12 persons, classroom-style seated training events are limited to 24 people, some small-scale

daytime family parties have been agreed to a limited maximum of 36 persons in the Hall.

The next Trustees meeting has been set for 20th January and we will re-consider the COVID-19 risk situation then, with the hope of holding a Quiz Night in March and re-introducing the Big Breakfast in April.

Various supply problems have resulted in the re-thatching of the North side of the Hall and the re-dressing of the South side now being programmed to take place in Spring 2022.

Chris Baldwin

Chairman, Madingley Village Hall Trust
e: chrisbaldwin1000@gmail.com
t: 01954 210766

**THE NATIONAL GARDEN SCHEME,
MADINGLEY HALL AND MADINGLEY
PARISH CHURCH**

2021 marked the 30th consecutive year of the garden opening under the auspices of the National Garden Scheme (NGS). Throughout, the event has been in partnership with the congregation of St Mary Magdalene, who have offered support in stewarding and in recent years prepared and served the delicious homemade teas in the church. The first opening on 28th June 1992 welcomed 500 visitors, paying £1 admission, and raising £560. Thirty years on, this has risen to 8,500 visitors and £40,000 raised for the scheme's charities and our nominated charity, Madingley Church Restoration Fund.

On 16th September, the NGS presented the Institute and Madingley Hall with a plaque commemorating the anniversary. This will be displayed at the entrance to the Walled Garden from the Top Car Park. We were delighted to welcome Susan Rawlings who, as ICE Deputy Director and Warden of Madingley Hall, set up the original opening (with some help from her young Head Gardener!) and Sue Baldwin who has prepared the church rota of stewards and organised the teas in the church. Over the years it has become a joint community occasion and we are most appreciative of all the help and support from the Village.

The NGS was founded in 1927 to raise money for District Nursing by opening gardens at one shilling a head. Ninety-four years later, £60 million has been raised for nursing and health charities and in 2020 the NGS made a £2.8 million donation to bodies including Macmillan Cancer Support, Marie Curie, Hospice UK and the Queen's Nursing Institute.



The NGS Presentation on 16th September 2021

Please save the date for next year's opening:
Sunday 19th June 2022.

Richard Gant

Head Gardener, Madingley Hall

CONNECT, CONVERSE AND CREATE

Fancy doing some woodworking or mending with a friendly group? Or just come along for a cup of tea and a chat? CamShed, part of the UK MensShed Association, has opened a space at Madingley Hall with the support of the Institute of Continuing Education.

Men's Sheds originated in Australia as a community space for older men to meet and chat whilst they pursue activities such as woodworking in order to combat loneliness and social isolation.

The CamShed offers a chance to 'connect, converse and create' to anyone young or old. We have a wide variety of tools and some supplies of wood and we meet every Wednesday, 11am to 2pm, at Madingley Hall (just past the car park on the left). Contact Alex Barrett, 07990 525810.

Hope to see you soon!



NEWS FROM MADINGLEY HALL



We hope you've all been keeping well.

The Hall's garden café remains open across the Winter months from 10am-3pm daily, serving drinks, cakes and light snacks. Please do pay us a visit and enjoy a walk around the gardens.

We're delighted to be hosting a new series of residential weekend courses across the Winter months and through to July 2022 at Madingley Hall, with over 25 courses in a wide variety of subjects, ranging from literature to technology. You can learn alongside like-minded students in a lively and supportive classroom environment. Non-residential places are available for those who live locally or prefer to stay elsewhere. Find out more and book your place at www.ice.cam.ac.uk/weekend.

Our next tranche of seven-week online courses begin in January. In the last year over 2,500 students joined these online short courses from over 50 countries, a true global learning community. Our ever-changing portfolio of online classes provides both personal enrichment and professional development, with courses ranging from Creative Writing: An Introduction to Writing Crime Fiction and Introduction to Archaeology to User Experience Design and Understanding Finance in Organisations. Discover the full range of courses and book your place at www.ice.cam.ac.uk/online.

Applications for our award-bearing undergraduate courses beginning in Autumn 2022 will open for

enrolments from mid-December. Thirty-five undergraduate certificates, diplomas and advanced diplomas will be available including new certificates in entrepreneurship and pre-medical studies – recognised by regional medical schools at Cambridge, East Anglia (Norwich) and Anglia Ruskin (Chelmsford) – and targeted at adults considering a career as a doctor, other registered healthcare professions or biomedical science. All award-bearing courses result in a University of Cambridge qualification. Find out more at www.ice.cam.ac.uk/qualifications.

We have several open days coming up throughout December and early next year where you can find out more and ask any questions you may have. View our upcoming events and book your free place at www.ice.cam.ac.uk/events

If you'd like to give the gift of learning this holiday season, we have gift vouchers available to purchase which can be redeemed against our wide range of remote short and online courses. Find out more at <https://www.ice.cam.ac.uk/gift-vouchers>.

We wish you a restful holiday period and a very happy new year. As ever, we will continue to update you throughout the year and look forward to seeing you very soon.

Dr James Gazzard

Director of Continuing Education

University of Cambridge Institute of Continuing Education

IMAGES OF MADINGLEY



Two 'snaps' of the High Street from the 1930s



(photo: Chris Baldwin)



(photographer unknown)



(photo: Heather Robinson)



A black squirrel spotted in a Madingley garden





(photos on this page: Chris Baldwin)

NEWS FROM THE AMERICAN CEMETERY

What did the Americans Bring to the Table in WWII?

Cambridge American Cemetery has taken part in the University's Open Cambridge event for some years now. Last year it was virtual. 2021 has seen us back with in-person history and horticultural tours. However, the Open Cambridge team kindly decided to throw in a theme this year, which had us scratching our heads – '*Edible England*'? Then, the light-bulb moment, when we realized that we could turn it on its head.

Lend-Lease

During WWII, rationing was implemented from January 1940. Within two months supplies of meat were already being controlled.

The Lend-Lease Act of March 1941 – sold to the American people as *An Act to Further Promote the Defense of the United States* – enabled Roosevelt to legally provide war material to Britain; payment to be made later.



American lease and lend food, UK, 1941: Dock workers take a break from unloading American Lend-Lease cheese from a ship to enjoy a lunch of American cheese sandwiches. IWM V 59

Goods were mainly transported by sea, in large, slow-moving convoys across the North Atlantic Ocean. In addition to military kit, fuel, and raw materials, there were also consignments of agricultural equipment and food.



Lend-lease Orange Juice: Little Elizabeth Rothwell, who had become anaemic and vitamin-deficient, was failing to thrive. She became Britain's 'Lease-Lend' War Baby, as the concentrated orange juice from California had helped to save her life. IWM V 161

The first shipment of cheese, bacon, beans, and canned meat arrived in the UK on 31st May 1941; these foodstuffs endeared the Americans to the average British family. In fact, such items constituted one-fifteenth of all food consumed in Britain in 1941. By war's end, nearly half of British food arrived in the UK by this route.

A different view of food

When Americans began arriving in numbers – after the attack on Pearl Harbor that drew them into WWII – they knew that after two years of war the British Isles would not be able to support their army. They had to bring everything with them, including their own food rations.

American logisticians and leadership were taken-aback by the sheer drabness of the stodgy diet that had been formulated by the British Government, which they believed sapped vitality. Brig. Gen. Ira Eaker, arriving in February 1942, was shocked by the lack of food: meat, fish, vegetables, jam, margarine, eggs, and condensed milk were all heavily rationed. However, once established, the troops got to know the villagers close to their camps, and they often shared their food rations with them, which helped to supplement the meagre stores of the civilian population.



Hot chocolate at Burton Bradstock, Dorset, 1944:

Betty 'Freckles' Mackay and Chris Kerley stand outside the cookhouse of the American camp at Burton Bradstock, Dorset and drink the cocoa they have just been given by Corporal David Roberts (of RR4 Albia, Iowa), who is leaning out of the window to chat to them. According to the original caption, these two children are big favourites in the camp and call at the cookhouse regularly after school. Betty's nickname was given to her by the GIs. IWM: D 20144

The only thing that was not rationed, was the unloved National Loaf, made from wholemeal flour with added calcium and vitamins. With their men away, women engaged in war work, which left them little time for shopping and childcare. By 'shopping', I mean the relentless queueing for rationed food. If housewives saw a queue they just joined it, often not knowing what they were waiting for. Many times they would get to the front of the line, only to find, that whatever it was had run out!

The GIs did not generally enjoy the British wartime diet. For example, they found that eggs were strictly rationed and generally unobtainable. The substitute was a form of powdered egg, loathed by British and Americans alike. Those living on bases out in the country soon learned that they could barter with the local farmer's wife for fresh eggs. However, they did find the Fish and Chips delicious, and so sent out regular orders – for up to 40 portions – to the local shop. The messenger, usually one of the nearby

village children, would be loaned a bike for the trip, and then rewarded with their own package of steaming hot food for their efforts.



Festive Cheer: With British soldiers away in Europe, war-hit families were issued with an urgent plea to invite their US colleagues to share their Christmas celebrations. Hulton-Deutsch Collection

American service personnel, being sent overseas, were presented with a series of pamphlets to help enable them navigate the choppy waters of international relations with civilian populations. The serviceman's *'Short Guide to Great Britain'* was full of useful hints and tips on how to get along with the British, and it explained a few facts about a country that had been changed by war:

The British are [warm] beer drinkers – and can hold it. The beer is now below peacetime strength, but can still make a man's tongue wag... [Loose lips, sink ships!].

The British have reserved much of the food that gets through solely for their children. For they have been fed at their schools and impressed with the fact that the food they ate was sent to them by Uncle Sam. You don't have to tell the British about lend-lease food. They know about it and appreciate it.

For the last two years the British have been taught not to waste the things their ships bring...food represents the lives of merchant sailors...when you destroy or waste food you have wasted the life of another sailor.

One thing to be careful about – if you are invited into a British home and the host exhorts you to 'eat up, there's plenty on the table', go easy. It may be the family's rations for a week spread out to show their hospitality.'

GIs were a long way from home and missing their own families. On the other hand, local children were keen to investigate the bases on their doorsteps. The Americans would often find themselves drawn into conversation with them. Sweets were heavily rationed in Britain, and so the young locals always wanted to see if the GIs would share their own.



"Got any gum chum?", two small English boys stop to ask an American. This official photograph was taken for propaganda purposes. IWM CH 12995

'To feed and spoil the children was the obvious and uncomplicated way to help these vulnerable members of society...' and then get to know their parents. Many friendships formed in war lasted a lifetime.



GIs Thanksgiving party: GIs and British Children. 200 British children who had suffered as a result of the war were guests of a United States unit on Thanksgiving Day in London. Photograph shows a view of the party with Americans serving the children food. The United States and British flags hang together in the background. IWM: EA 25885

The kindness of the young American servicemen to local children knew no bounds. From sharing candy and chocolate bars to GIs laying on lavish parties, crafting toys, and playing Father Christmas; it seemed as if American servicemen never ceased from their efforts to bring some sunshine into the unrelentingly grey and drab little lives. Looking back on their childhood, many elderly British people declare, *'I don't really remember the Yanks; but I remember the food!'*

The final Lend-Lease bill to Britain was \$31 million, for which the debt, at 2% interest, was finally paid in full only in December 2006 – a debt of honor – through a mixture of reverse lend-lease (leasing land to the Americans to build air bases), payment in kind, exchange of valuable technologies, and cash...with thanks from a grateful nation.

Suzie Harrison

American Battle Monuments Commission
Cambridge American Cemetery and Memorial

OUR MP, ANTHONY BROWNE



We have not received a report for this issue from our MP, who has previously written: 'I remain available via anthony.browne.mp@parliament.uk Please don't hesitate to reach out if you think I can help.'

Anthony Browne MP

NEWS FROM OUR COUNTY COUNCILLOR, MICHAEL ATKINS



It's been a busy few months for the County Council – we have oversight of local health and education provision, both of which are being severely tested by the current wave of the COVID-19 pandemic.

Special support

Earlier this month we agreed with the national Government that Cambridgeshire would become an 'Enhanced Response Area' because of our high case rates. This will help unlock funding for accelerating vaccine and booster rollout, and

support additional measures in schools such as face coverings in communal areas.

At the time of writing, vaccines were being offered to 12-15 year olds in schools and at vaccination centres (booking in advance required) and boosters for over 50s.

All the previous sensible advice still applies: get vaccinated, meet people outdoors where possible, and when indoors wear masks and improve ventilation.

Traffic

In local news, I've been meeting with officers to review the Active Travel Schemes that have been suggested for Madingley. Thank you to everyone who took part in the recent consultation or contacted me directly.

The proposals for the road to Dry Drayton won't be taken up as concerns were raised about the width of the road, but we're still hopeful of finding something that works for everyone on Cambridge Road. This might mean closing the junction access to the A1303 for eastbound traffic (to reduce potential rat-running) but leaving the full width of the road for cyclists and car users to make overtaking easier. There'll be a full local consultation on the final plans, so keep an eye out for that.

Green issues

Finally, the Council has been holding events to mark COP26 and what we can do to tackle the climate emergency. I took part in an e-bike ride to Swaffham Prior (see photo below), where the Council is supporting the village to move away from oil-heating to a community-wide heat-pump scheme. I can report that both the heat pump and the e-bikes are pretty revolutionary!

If you're looking to achieve a more active lifestyle and reduce car use, it's definitely worth renting an e-bike to see what they're like: our group of all ages travelled nine miles with very little effort or discomfort in under an hour.



If you need to contact me or would like to discuss any issues in Madingley, you can do so on matkinslibdem@gmail.com, or by post to 27 Silverdale Avenue, Coton, CB23 7PP.'

Michael Atkins

NEWS FROM OUR DISTRICT COUNCILLOR, TOM BYGOTT



Madingley spared major developments

In September 2020, the District Council, together with Cambridge City Council, published the Call for Sites submissions as part of their preparations for the Greater Cambridge Local Plan up to 2041.

Developers and landowners, hoping to make a quick profit, suggested far more development sites than were needed.

The Council, knowing that the vast majority of these sites would be rejected, subjected residents to the cruel and unnecessary ordeal of waiting for an entire year, without being formally able to make any direct comment, to find out whether their homes and lives would be blighted by unwanted development.

The good news is that Madingley has been spared the major developments proposed in the Call for Sites, and none is going forward within the parish.

Smaller sites that had been proposed in Madingley included three sites totalling 3.2 hectares for between 20 and 50 houses and up to 20,000 sq m of floor space for other uses.

In addition, Trinity College had proposed building 4,200 houses on almost the entire area bounded by the M11, A428 and the American Cemetery.

This one of the finest areas of countryside in England which should be preserved in perpetuity and it is a great relief that this site has been rejected.

Audited accounts

Councillors were called in for an Extraordinary Meeting on Monday 18th October to discuss problems with preparing South Cambridgeshire District Council's audited accounts. The Council has been unable to provide audited accounts for the 2018/19 year within the required time. It is unable to start the audit on the 2019/20 or 2020/21 accounts and is building up a long backlog of unaudited accounts.

The auditor, Ernst and Young, has issued a report saying that they are considering 'issuing recommendations to Council under Section 24, Schedule 7 of the Local Accountability and Audit Act 2014'. This would put the Council into something analogous to 'special measures'.

New Local Plan Consultation started

Another consultation has started for the new Local Plan for Cambridge City and South Cambridgeshire covering the period up to 2041. Comments can be made by visiting www.greatercambridgeplanning.org/localplan. The consultation ends at 5pm on 13th December 2021.

The two councils have decided to build 12,000 more dwellings than the Government requires: 48,840 new flats and houses across 'Greater Cambridge' between 2020 and 2041.

Since I raised the issue about whether the district has enough water to supply to all these new houses, the press announcement on the new consultation has been released containing the sentence: "However, the strategy is entirely dependent on water supply, and the number of new homes would need to be reduced without urgent action on new sources of water supply, such as new reservoirs, by the water industry and central Government."

Metro project scrapped

Former Mayor James Palmer's visionary project to create a metro system with tunnels under the centre of Cambridge has been permanently scrapped.

The metro may have been cancelled, but the over-heated growth and additional houses to be built in our area haven't been. The countryside is still to be concreted over, but there is no proper answer how the new residents are going to travel around. Public transport infrastructure is the thing that makes new building tolerable, but we are being asked to put up with the inconvenience of one without having the benefit of the other. Already there is talk of bringing back the idea of a Congestion Charge. Residents of the villages surrounding Cambridge

are to be punished for not using the public transport that hasn't been provided.

Hot Tub Superstore

Observant motorists will have noticed that signs marked 'Hot Tub Superstore' have appeared on the access roads to the A14 at the Swavesey, Bar Hill and Dry Drayton junctions.

Their appearance has been left unchallenged for several months and they are coloured brown in the same format as official signs for national parks and tourist attractions. A distinction has to be made between business advertisements and road signs, which are essential for highway safety.

Cambridgeshire County Council is responsible for maintaining road signs and owns the poles to which these signs are attached, but so far I have not been able to get them to do anything about it.

Cllr Tom Bygott

cldr@bygott.net / 07765 475 513

NEWS FROM OUR DISTRICT COUNCILLOR, CORINNE GARVIE



COVID-19 rates

The COVID-19 situation in Cambridgeshire is currently very concerning. As a reminder, you can book online at www.nhs.uk/conditions/coronavirus-covid-19 or by phoning 119. You can also get your vaccine from one of the many walk-in centres and pop-up clinics in the area – find out where by visiting: www.thevaccinators.co.uk.

Electric bin lorries

SCDC is moving forward with its commitment to be zero carbon with the purchase of two more electric bin lorries. These vehicles are expensive but the savings that are made on fuel, together with the environmental benefits, means that they pay for themselves in a relatively short time.

Local Plan and Climate Change

Concern for climate change underpins all Council policies. The Local Plan has been written to prevent indiscriminate development and the Council welcomes your comments.

First Proposals

Nineteen new sites have been proposed across the Greater Cambridge area for housing and business space, alongside the sites already adopted in the 2018 Local Plans. None is proposed in Madingley.

The Council wants Greater Cambridge to be a place where a big reduction in our climate impacts comes with a big increase in the quality of everyday life for all our communities.

New development must minimise carbon emissions and reliance on the private car, create thriving neighbourhoods with the variety of jobs and homes we need, increase nature, wildlife and green spaces and safeguard our unique heritage and landscapes.

All new buildings are to be net zero carbon (only using as much energy as they generate) and are dependent on sufficient water supply which will require the Government and water companies to create a plan to deliver this.

Cambourne Community Food Project

HopeCIC (Community Interest Company) is now operating a weekly foodbank in Cambourne, supported by SCDC and Cambourne Parish Council.

Open from 11.00am–2.00pm every Wednesday at the Hub in Cambourne, the foodbank is available for any South Cambridgeshire resident to use. Donations are optional, and further support and signposting will be available to help with things like finance/bills. The scheme will run for a trial period of four months.

Rehousing Afghanistan refugees

SCDC has already supported three Afghan families and provided homes for them in the district, where they have been welcomed by their local communities.

Five further homes have also been found so more families can be supported when they relocate to the UK through the Afghan Locally Employed Support (LES) scheme.

Finances

The finances of the Council are sound and there are no special measures. There was a delay in submitting accounts of 17/18 because of COVID-19 and the accounting system this Council inherited. An improved system was used to make it more efficient.

Planning

The Planning Department has just won a High Court challenge by a householder who said that the planning rules had been incorrectly applied. It has also won an award for its work. There is a shortage of staff, because the Council cannot pay private sector wages, but there is no great delay in getting planning decisions passed. Hotel Felix in Girton is going through the planning process at the moment.

As a new Councillor, I am impressed by the work of the officers of the Council, over-worked as they are.

Please contact me with comments, questions, problems, reports, suggestions or complaints to do with SCDC services. These are housing need, housing repairs for council tenants, planning, benefits, council tax, bin collection and environmental health issues. Don't fight on your own. I am available to help you to get the best outcome possible for your situation.

Corinne Garvie

cllr.garvie@scambs.gov.uk

mobile: 07780 932267

The Editors have tried in good faith to establish the accuracy of the material used, including images, in this Newsletter. Any breaches of copyright are unintentional and are regretted.

'WEDNESDAY B' BIN COLLECTIONS

December

15th	BLUE and GREEN
22nd	BLACK
31st (Friday)	BLUE

January 2022

8th (Saturday)	BLACK
14th (Friday)	BLUE and GREEN
20th (Thursday)	BLACK
26th	BLUE

February

2nd	BLACK
9th	BLUE and GREEN
16th	BLACK
23rd	BLUE

March

2nd	BLACK
9th	BLUE and GREEN
16th	BLACK
23rd	BLUE and GREEN
30th	BLACK

BUSES BETWEEN MADINGLEY AND CAMBRIDGE

Outbound services pick up in Cambridge Road adjacent to the Madingley Hall gates roundabout and arrive at Drummer Street Bus Station. Inbound services begin at Drummer Street Bus Station and stop in the High Street near the Village Hall.

Whippet Coaches Bus No. 8 (Monday to Saturday only)

Outbound:

Madingley	Drummer Street (Bay 3)
10.03	10.25
11.33	11.55
15.03	15.25

Inbound:

Drummer Street (Bay 3)	Madingley
10.30	10.49
13.00	13.19
16.30	16.49

Stagecoach 4 bus

The Stagecoach 4 bus stops by request outside Madingley Mulch ('Coton, Inglewood') and runs every 20 minutes or so between Cambourne and Cambridge, starting before 7.00am. Please see the Stagecoach website for details: <https://www.stagecoachbus.com/routes/east/4/cambridge-cambourne/xcao004.o>

Madingley Road Park & Ride

The Madingley Park & Ride service goes to St. Andrew's Street outside Grand Arcade, and leaves from there also. Outbound times are as follows:

Monday to Friday: 07.00 to 20.10 (every 10 minutes until 17.50; then every 20 minutes until 20.10). Saturday: service begins at 08.00. Sunday and Public Holidays: 08.50 to 17.50 (every 10 minutes)

(Inbound services: Monday to Friday: 07.20 to 20.30; Saturday: service begins at 08.20. Sunday and Public Holidays: 09.10 to 18.10 [every 10 minutes])

A daily Park & Ride ticket costs £3. Each paying adult can also take up to three under-16s free.

Charges are made for parking at Cambridge Park & Ride sites, although the first 18 hours are free.

(Advance purchase and season tickets are available at: <http://cambridgeparkandride.info/pricing.shtml>)

Concessionary fare pass holders can travel free on Park & Ride services after 9.30am, Monday to Friday, and all day during weekends and Bank Holidays.

Whippet Coaches Bus Route U (Universal) runs from just outside the south-east corner of Madingley Park & Ride (Eddington Avenue), to Cambridge Railway Station and the Cambridge Biomedical Campus (Addenbrooke's, New Royal Papworth and Rosie Maternity Hospitals).

Details from: <http://www.go-whippet.co.uk/new-route-u/>

angli-EAR
Hearing & Tinnitus Solutions

**Have you heard?
We've moved!**

Find us at our new address:
Audiology House (Cambridge)
15 Woollards Lane, Great Shelford, Cambridge CB22 5LZ

Independent audiology experts you can trust

- Hearing Assessments
- Ear Wax Removal
- Hearing Aids
- Tinnitus Solutions

BOOK ONLINE www.angliarhearing.co.uk

01223 661399
info@angliarhearing.co.uk

COVID-19 SAFE



Get out and about and save money with **PANTHER TAXIS**

Did you know that we now offer a **REDUCED RATE**
village to village service to or from **YOUR VILLAGE?**



**Only pay
door to door
not a penny
more**

Find out how much
you can **SAVE** by
downloading our app



With a fleet of over 650 vehicles running
24/7, you know who to call:

01223 715715

www.panther taxis.co.uk

Prices are fixed based on the Cambridge metered rates
to or from the included villages.

Villages outside of this area may still have a callout fee.

Rothwell's Carpet Cleaning

01223 832 928

www.Rothwells.biz

Carpet Cleaning

Stone Floor, Upholstery & Rug Cleaning.

A few points that make us stand out from the others,

Rothwell's has been in business since 1993.

We're an honest local family firm.

Our large truck mounted machines mean more cleaning
& drying power for the best results possible.

Members of both the NCCA and TACCA.

We will move the furniture for a thorough clean.

100% satisfaction or it's FREE.

Call Oliver or Max Campbell for expert help today.

Rothwell's, Malting End, Kirtling, Newmarket, CB8 9HH



A Magical Christmas with Us



BOOK A POD HERE



the design branch

TREE CARE & LANDSCAPING



Providing a comprehensive & professional service in all aspects of
tree care and landscaping

Tree Felling | Dismantling | Height Reduction | Pruning
Reshaping | Thinning | Hedge Trimming & Cutting
Fruit tree pruning | Site Clearance | Landscaping.

Your local Tree Surgeon

I am fully insured and fully NPTC qualified.



If you would like to discuss a particular project, please feel free to call on, Madingley:
T: 01954 211279 M: 07929 064420 E: john@thedesignbranch.co.uk



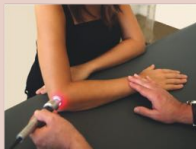
The
Form
Practice

Meet our new Physiotherapist, Annemette



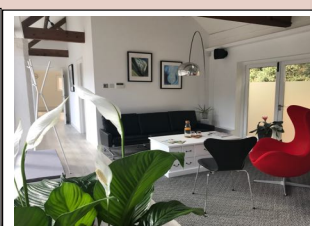
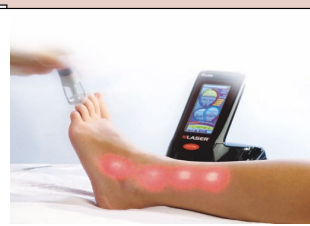
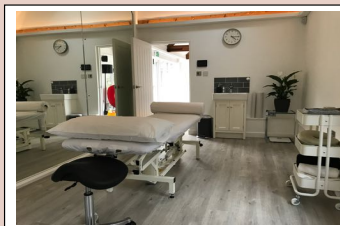
Annemette is a qualified Chartered Physiotherapist, focusing on musculoskeletal issues and alignment. She will be working Monday to Thursday each week. We are offering **an introductory 20% discount** on physiotherapy until end September.

Claire and Faustine continue to practice Osteopathy daily, and we also have both reformer Pilates with Jon and Melanie offering both Pilates and Yoga in the studio. For other services, please visit our website.



NEW... we have a new class 4 Infra-red Laser which is proven to help repair skin, tendons, ligaments and muscles faster with less inflammation, scarring and pain.

Claire also specialises in women's health: gynaecology; pre and post-natal; and pelvic floor.



www.theformpractice.com

info@theformpractice.com
01954 214473

Main Street, Hardwick
CB23 7QS

Vintage travel

ESTABLISHED
1990

Your Local
Travel
Company



HANDPICKED VILLAS WITH POOLS

A selection of beautiful individual villas
& houses with pools in tranquil settings
& areas of traditional local culture.

Call for a brochure or to speak to one
of our specialists **01954 261431**

or visit our website
www.vintagetravel.co.uk

GREECE • SPAIN • LANZAROTE •
BALEARICS • PORTUGAL • TURKEY •
FRANCE • ITALY • CROATIA



ABTA
ABTA No V5643